



Providing flexible solutions for
INDUSTRY

“Great customer service, fast prototypes, wide knowledge base, willingness to help in our development process... These are the things that come to mind when I think of Marian.”

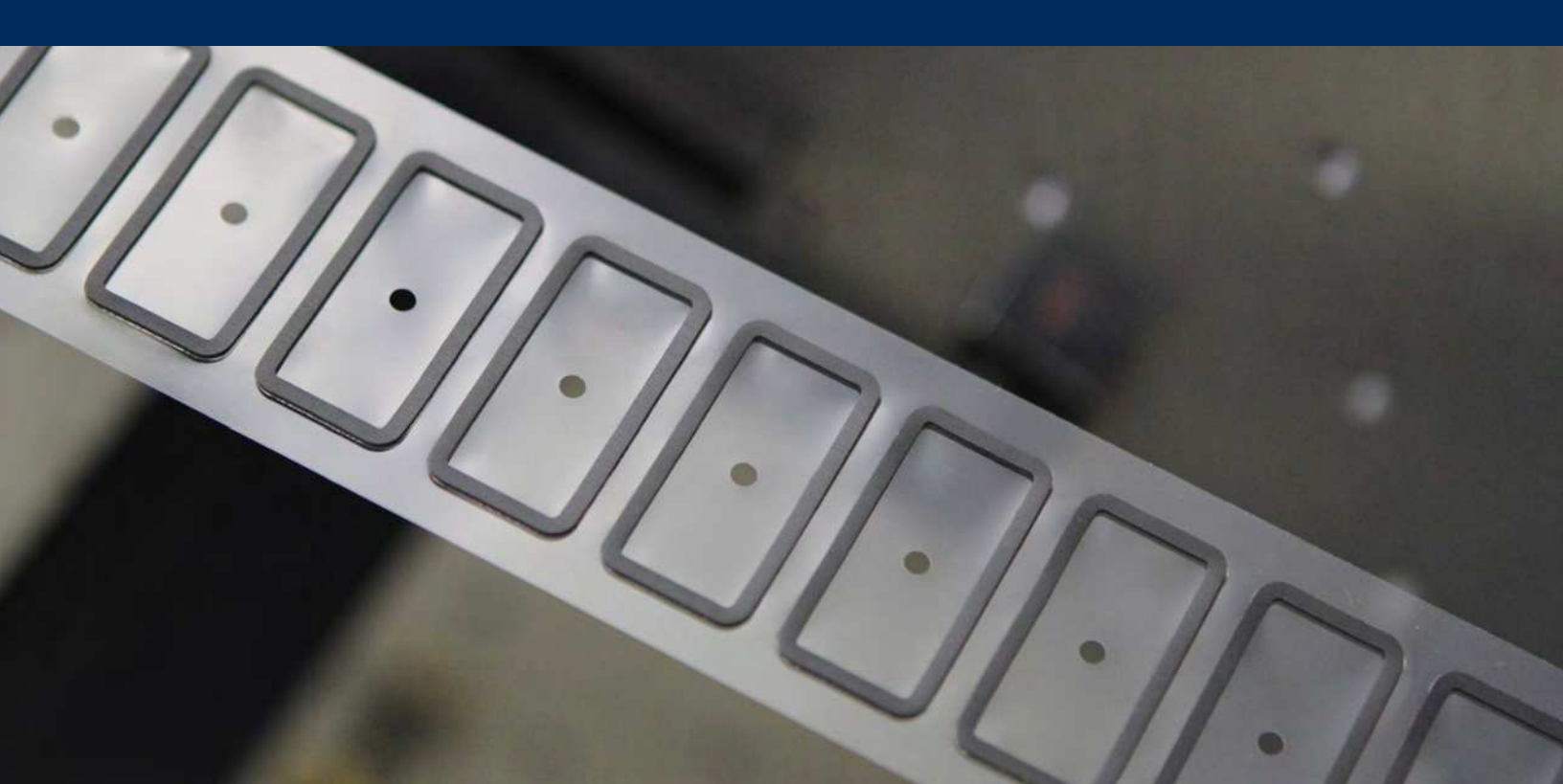
– Senior Engineer, Product Development Consulting Firm

www.marianinc.com | sales@marianinc.com

 [marianincorporated](https://www.facebook.com/marianincorporated)

 [@Marianinc](https://twitter.com/Marianinc)

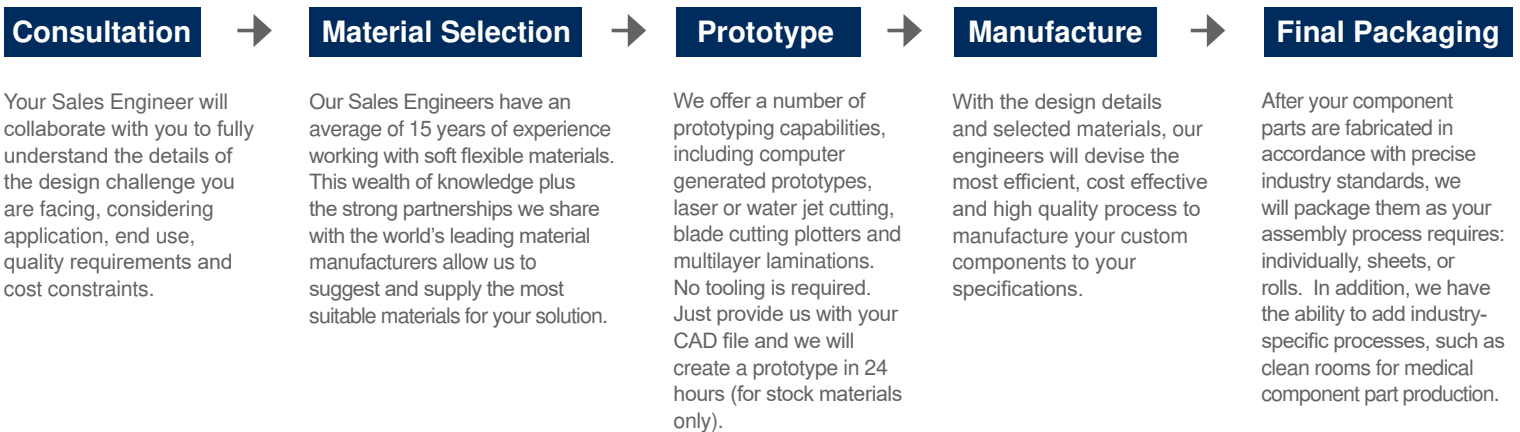
 [marian-inc.](https://www.linkedin.com/company/marian-inc)



Converting at Marian

Marian is an ISO 9001:2015 certified leader in developing innovative die-cut solutions. We specialize in using cutting-edge manufacturing processes to convert the toughest materials into precision components. Our value-added services and capabilities are extensive and include: material specification and selection, fast prototypes, multi-layered laminations, ability to meet tight tolerances, island placement capabilities, and automated assembly techniques. Leverage our wide-ranging experience and global resources to turn your design challenges into solutions.

Our Process





Materials

With the most extensive material knowledge in the industry, Marian will find the right material for your application. Our engineers and sales associates are familiar with thousands of materials ranging from inexpensive sponges and foams to high-end foils and absorbers. Marian has a long-standing relationship with premier material manufacturers such as 3M, Rogers, Tesa, Parker Chomerics, Polymer Science, and Saint Gobain.

- Sponges and Foams
- Adhesives and Tapes
- Conductive Tapes
- Graphite
- Thermal Pads
- Copper, Aluminum Foils
- Films, Rubber, TPR
- Filter Fabrics and Mesh
- Urethanes
- Silicones



Manufacturing Capabilities

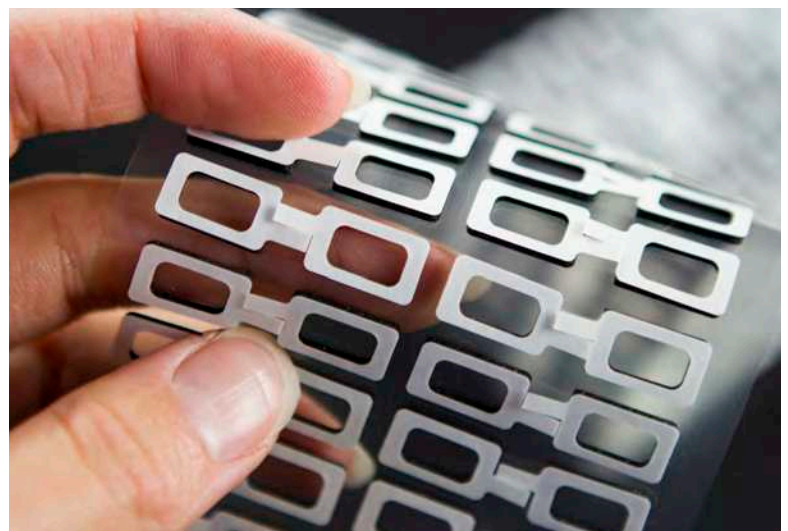
Marian continuously invests in and creates innovative manufacturing technologies to produce high quality component parts. The components manufactured by Marian have proven to enhance assembly processes and reduce costs. With a wide variety of manufacturing capabilities we can offer a solution to meet the needs of your application.

- Rapid Prototyping
- Rotary Die Cutting
- Flat Bed Die Cutting
- Match-Metal Die Cutting
- Plotter
- Precision Slitting
- Laser Cutting
- Water-jet Cutting
- Laminating
- Assembly
- Screen Printing
- Spooling

Solutions

Designing a new product can be challenging. Custom components manufactured by Marian provide solutions for a variety of applications seen in today's cutting edge product designs.

- Bonding & Joining
- Gasketing & Sealing
- EMI/RFI Shielding
- Thermal Management
- Cushioning & Vibration Damping
- Filtering & Venting
- Surface Protection
- Electrical Insulation
- Light Blocking





Marian is a global leader in providing precision die-cut component parts for customers in the consumer electronics, automotive, and medical industries. With over 1,000,000 square feet of production space worldwide and state-of-the-art manufacturing technologies, Marian engineers work closely with customers to solve complex manufacturing and assembly problems. Marian’s responsive approach, in-depth material knowledge, innovative manufacturing capabilities, and high standards for quality all add up to provide you with the best component solutions in the industry.



Indianapolis, IN, US
800.773.0062

El Paso, TX, US
915.591.8558

Bay Area, CA, US
(Sales and Engineering Office only)
408.973.7866

Suzhou, China
86.512.6283.3438

Monticello, IN, US
800.773.0062

Fort Worth, TX, US
817.332.6151

Bremen, Germany
49.4241.80264.00

Suzhou, China
86.512.6283.7138

Chicago, IL, US
630.293.7800

Milwaukee, WI, US
414.672.3000

Singapore
65.6481.0633

Shenzhen, China
86.755.2967.0073

www.marianinc.com | sales@marianinc.com

